

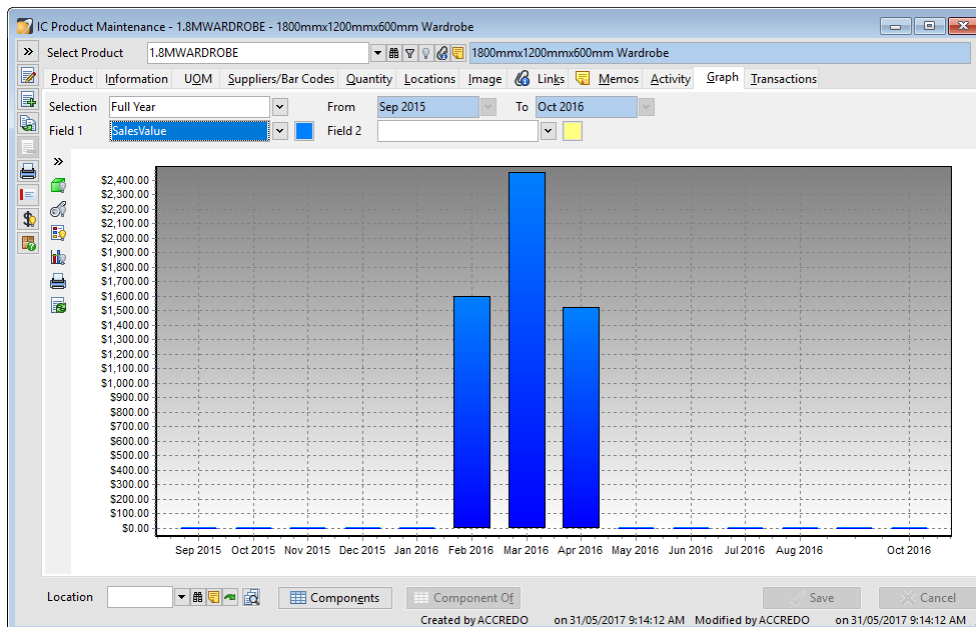
Tips & Tricks

Defaulting Graph Fields for Maintenance Forms

You can set your own default Selections and Fields for a Maintenance Form Graph Tab using an OnOpen script, so that when the Graph Tab is opened, the Graph will display the way you want it to.

For example, go to: Maintain > Inventory Control > Products > Graph Tab.

The SELECTION defaults to **Full Year**, and FIELD 1 defaults to **SalesValue**.



Let's say we wanted the Graph Tab to open with **SalesQuantity** in FIELD 1 and **SalesQuantityLastYear** in FIELD 2.

- 1 Go to: Main Menu > Script > Script Editor.
- 2 Copy the script below and paste into the Script Editor.

Alternatively you can download the script from the Accredo FTP Site

ftp.accredo.co.nz/Public/Downloads/Scripts, select **ICProduct_SetGraphFields_OnOpen.pfs** and save to your Scripts folder.

```
Dim frmICProd1 as Object
frmICProd1 = GetTriggerObject
if IsNull(frmICProd1) then frmICProd1 = GetActiveObject
if IsNull(frmICProd1) or frmICProd1.ClassName <> "ICProductForm" then Error "wrong form class for script"
frmICProd1.GraphField = "SalesQuantity"
frmICProd1.GraphField2 = "SalesQuantityLastYear"
frmICProd1.ActivePage = 0
frmICProd1.ActiveProperty = ""
```

```

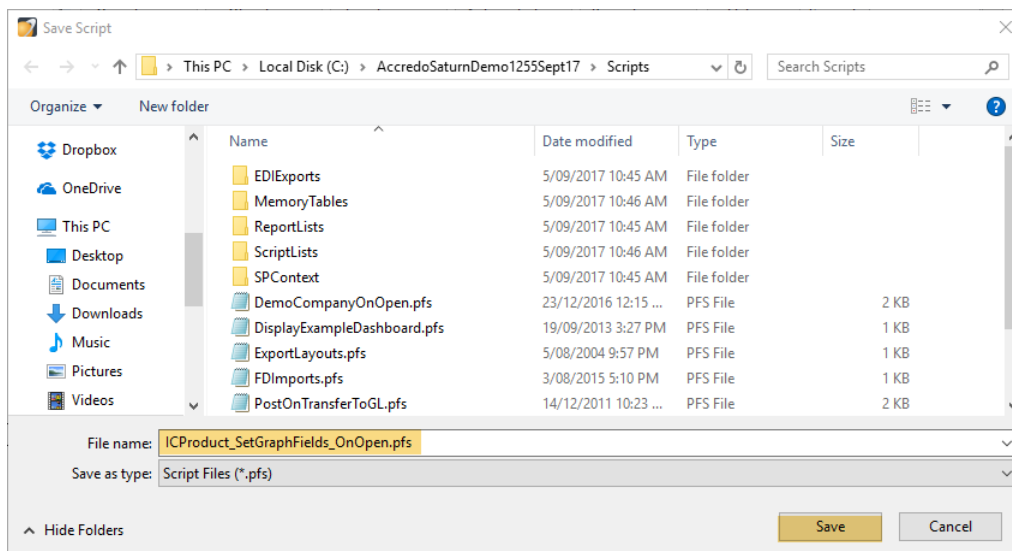
1 Dim frmICProd1 as object
2 frmICProd1 = GetTriggerObject
3 if IsNull(frmICProd1) then frmICProd1 = GetActiveObject
4 if IsNull(frmICProd1) or frmICProd1.ClassName <> "ICProductForm" then Error "Wrong form class for script"
5 frmICProd1.GraphField = "SalesQuantity"
6 frmICProd1.GraphField2 = "SalesQuantityLastYear"
7 frmICProd1.ActivePage = 0
8 frmICProd1.ActiveProperty = ""

```


Line: 8 Char: 31

Buttons: Check Code, Breakpoint, Run, Print, Add Shortcut, Check and Save, Load..., Save...

3 Click  **Save** and enter the File Name **ICProduct_SetGraphFields_OnOpen.pfs**. Click **SAVE**.



4 Assign the Script to a Script Event. Go to Main Menu > Scripts > Script Events. Check you don't already have a script linked to ICProductForm > On Open. If you do, then contact your QSP or Accredo Support to have the code amalgamated into your existing script.

5 Click  **Edit** (F11).


6 Add a row with the following selections:

MODULE: **IC**

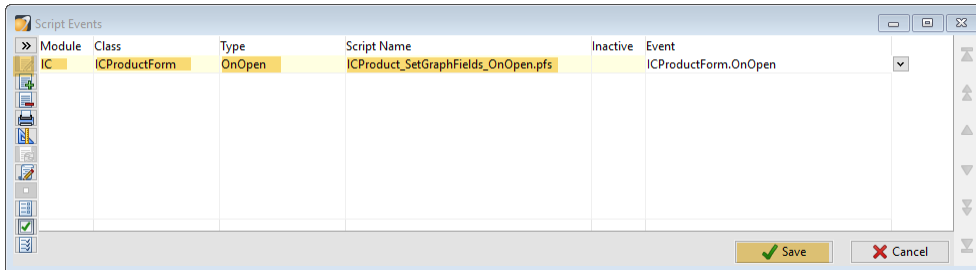
CLASS: **ICProductForm**

TYPE: **OnOpen**

SCRIPT NAME: **ICProduct_SetGraphFields_OnOpen.pfs**

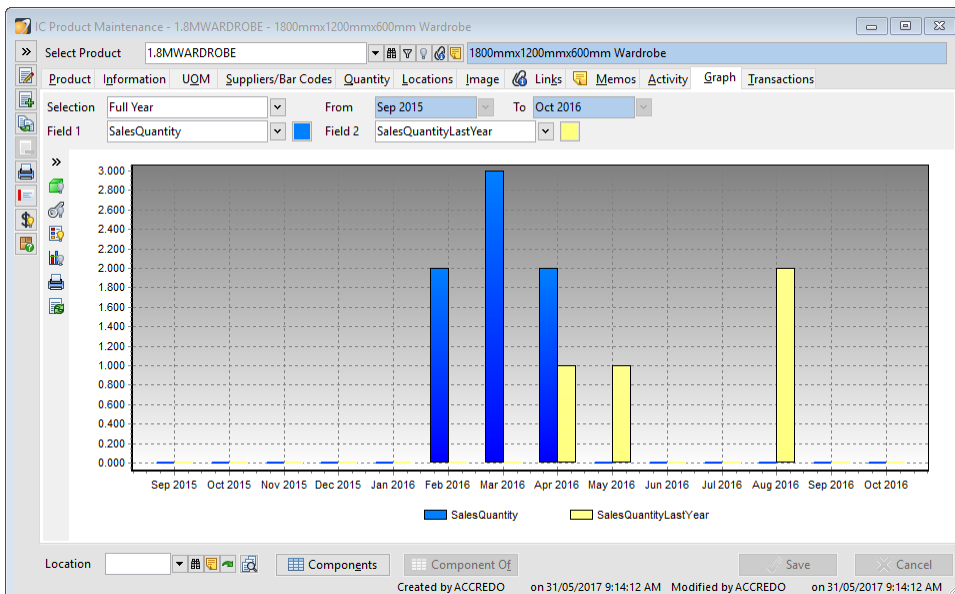
To select the Script Name, you can click  SELECT FILE (F2) to select the file name, or you can type the file name.

7 Click  SAVE (F9).



8 Go to Maintain > Inventory Control > Products > Graph Tab.

Your Graph will now display with This Year and Last Year Sales Quantities.



You can set different defaults for different Users by modifying the code in the script. Contact your QSP or Accredo Support for assistance with this.